



SMug Kit Installation Guide

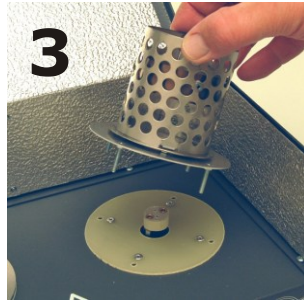
Warning: Disconnect from Power Supply before conducting the Installation!
If you just used the machine the Heater Cover and the Heater Bulb will be extremely hot! Leave to cool down and/or wear Mit/Glove.



1 Remove Y Cover



2 Remove Heater Bulb.
Note: Use Paper Cover of new Bulb



3 Remover Heater Cover



4 Install SMug Heater Cover



5 Install SMug Heater Bulb



6 Finished!

Note: If you have an older Model HTP616 you need to open the Housing and remove the Nuts that hold the Heater Cover and put them back on after installing the SMug Heater Cover. In this Case it would be a permanent installation.

Printing on SMugs require Timer setting 7 for cold start and 6 or 5 for continuous transfer printing.

Copyright 2006 TheMagicTouch GmbH, Germany.



SMug Kit Installation Guide

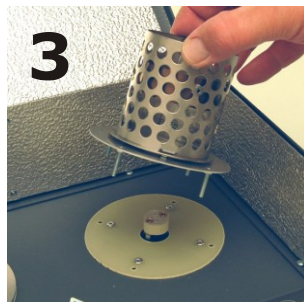
Warning: Disconnect from Power Supply before conducting the Installation!
If you just used the machine the Heater Cover and the Heater Bulb will be extremely hot! Leave to cool down and/or wear Mit/Glove.



1 Remove Y Cover



2 Remove Heater Bulb.
Note: Use Paper Cover of new Bulb



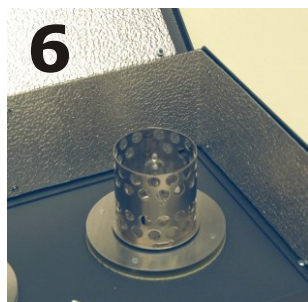
3 Remover Heater Cover



4 Install SMug Heater Cover



5 Install SMug Heater Bulb



6 Finished!

Note: If you have an older Model HTP616 you need to open the Housing and remove the Nuts that hold the Heater Cover and put them back on after installing the SMug Heater Cover. In this Case it would be a permanent installation.

Printing on SMugs require Timer setting 7 for cold start and 6 or 5 for continuous transfer printing.

Copyright 2006 TheMagicTouch GmbH, Germany.